

HW9563P

Dual band Gigabit Outdoor Wireless AP Base Station



Main Features

- High 1000mW Wireless Power Delivers Long-Range Coverage
- IP67 Level Waterproof Housing for Harsh Outdoor Environments
- QCA9563+QCA9882+QCA8334 Chipset, up to 1200Mbps Wireless Speed
- 128MB SDRAM + 16MB Flash Build-in for Higher Performance
- Four External Antenna N Type Connector Maximizes Wireless Connectivity
- Configured one external directional panel ANT(built-in 14dBi 2.4GHz & 17dBi 5.8GHz ANTs)
- Gateway / Repeater / AP / WISP Client operation modes
- IEEE802.3at PoE supports up to 100 meter (200 feet) deployment
- Up to 128 online users, outdoor open field directional coverage range about 600meters
- Wireless LAN Controller Central Management Support

Descriptions

HW9563P is a Qualcomm Solution 11ac high power industrial use Outdoor AP with the next generation 802.11ac Wi-Fi standard, combined 1200Mbps Wi-Fi speed over 2.4GHz(300Mbps) and 5GHz(900Mbps), equipped Gigabit WAN port, fast Ethernet data rate make more than 100 end users can access into it to enjoy seamless HD movies, streaming, online gaming, wireless security and other bandwidth-intensive tasks.

Metal waterproof, dust proof and sunscreen shell, temperature adaptive and board protective

HW9563P with metal waterproof, dust proof and sunscreen shell, avoid the damage from dust, thunderstorm weather. Meantime, it's adaptive to various environment, the working temperature can be normal at -40°C to 70°C. Suit for any country.

High Power design, SMA connector for external antenna, more range and stable signal

Designed in two line Power Amplifier on PCB board, the power can be 1000mW high power, 4PCS SMA connector, can connect with panel/omni antenna based on request, can greatly increase the wifi range and supply the stable wifi signal for users.

Power over Ethernet

HW9563P has integrated IEEE802.3at Power over Ethernet (PoE), for easy installation and lower cost. So it can be installed in areas where power outlets are not readily available, eliminating the mess of altering existing network infrastructure.

Access Controller System

Work with WLAN controller in wireless AP operation mode, easily access advanced network settings through PC, like AP status monitor, change IP address, ESSID, Channel, Password, upgrade firmware, backup and restore.

WPA / WPA2 Encryptions - Advanced Security

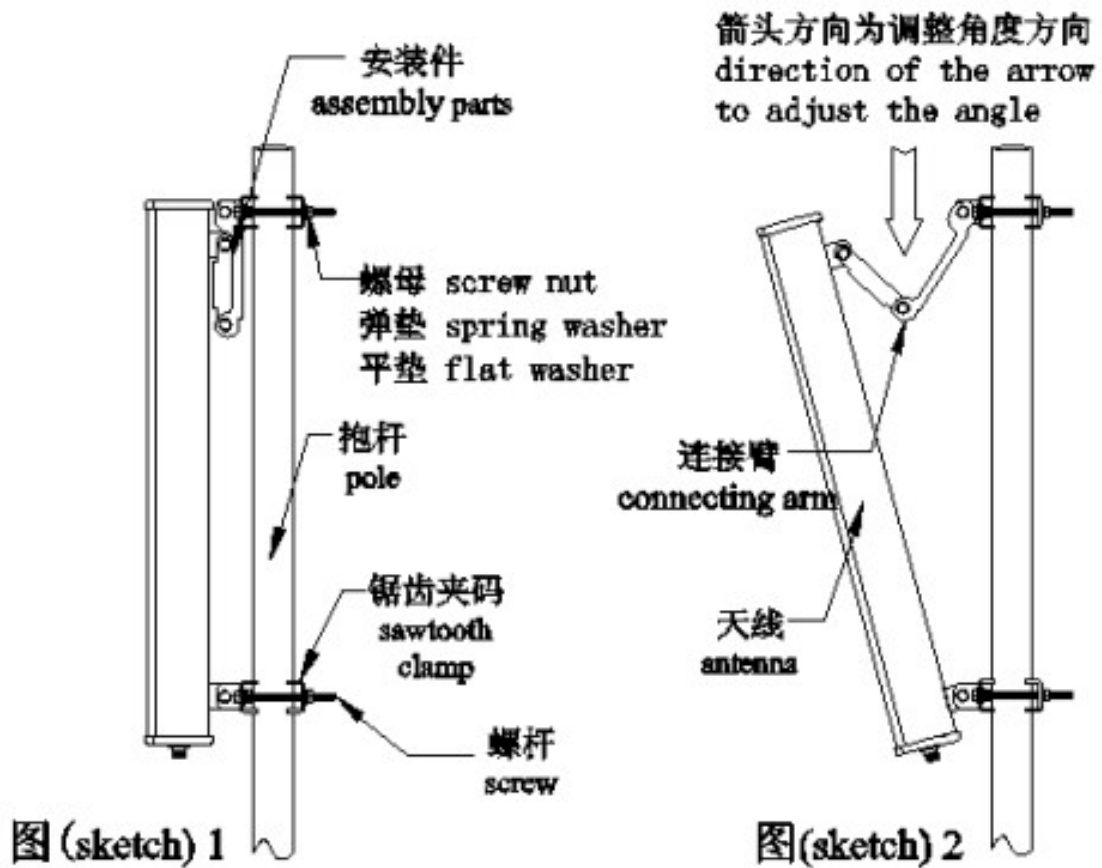
With the most attentive wireless security, the HW9563P High Power Wireless Access Point provides multiple protection measures. It can be set to turn off wireless network name (SSID) broadcast so that only stations that have the SSID can be connected. The AP provides wireless LAN 64/128/152-bit WEP encryption security, and WPA/WPA2 and WPA-PSK/WPA2-PSK authentication, as well as TKIP/AES encryption security.

Specifications

Wireless	
Standards	802.11a/b/g/n/ac
Data Rate	1200Mbps
Frequency Band	2.4Ghz & 5.8Ghz
Wireless Transmit Power	2.4G - 11b/g: 29dBm, 11n HT20:28dBm, 11n HT40:28dBm 5.8G - 11a: 26dBm, 11n HT20:26dBm, 11n HT40:26dBm 11ac HT20:26dBm, 11ac HT40:25dBm, 11ac HT20:24dBm
Receive Sensitivity	2.4G - 11b@11Mbps:-95dBm, 11g@54Mbps:-82dBm, 11n HT20@MCS0/8:-95dBm, 11n HT20@MCS7/15:-78dBm 11n HT40@MCS0/8:-93dBm, 11n HT40@MCS7/15:-75dBm 5.8G - 11ac HT20@MCS0:-92dBm, 11ac HT20@MCS8:-70dBm, 11ac HT40@MCS0:-89dBm, 11ac HT40@MCS9:-65dBm, 11ac HT80@MCS0:-87dBm, 11ac HT80@MCS8:-62dBm,
Country code	FCC、 IC、 ETSI、 MKK、 MKK1、 MKK2、 MKK3、 NCC、 RUSSIAN、 CN
Modulation	OFDM = BPSK,QPSK, 16-QAM, 64-QAM DSSS = DBPSK, DQPSK, CCK
Operation Mode	Gateway, Repeater(Extender), AP(access point), WISP
Wireless Security	64/128-bit WEP, WPA/WPA2, WPA /WPA2-Personal (TKIP/AES)
System Requirements	Windows 7/Vista/XP/2000,Mac OS®, Linux or Android OS, iOS
Hardware	
Chipset MCU	QCA9563+QCA9882+QCA8334
Flash	16MB
SDRAM	128MB
Interfaces	1 x RJ-45 for 10/100/1000 Mbps(POE)
Button	Reset Button

Antenna	4 N Type Connector
Power Supply	IEEE 802.3at PoE 48V0.5A
Base AP Dimensions(W x D x H)	215*280*80mm
Software	
WAN Type	Dynamic IP/Static IP/PPPoE/L2TP(Dual Access) /PPTP(Dual Access)
SSID	Multiple SSID (4 SSID for 2.4G, 4 SSID for 5.8G)
Security	WEP Encryption-64/128/152 bit WPA/WPA2 Personal (WPA-PSK using TKIP or AES) WPA/WPA2 Enterprise (WPA-EAP using TKIP) Hide SSID MAC/IP Address &URL filtering Wireless STA (Client) connected list
Firewall	DoS, SPI Firewall, IP Address Filter/MAC Address Filter/Domain Filter IP and MAC Address Binding
Protocols	IPv4
DHCP	DHCP Server, DHCP Client
Network	Port Mapping, DMZ Host, Statics Routing, DDNS,UPNP
Management	Firmware Upgrade and backup, factory Reset, Restart, WEB management, log management, the PING tool
Others	
Operating Temperature	-40°C ~70°C (-40°F~158°F)
Storage Temperature	-40°C ~70°C (-40°F~158°F)
Relative Humidity	10% ~ 95%, Non-condensing
Storage Humidity	5%~95%, Non-condensing
Certifications	CE,FCC,ROHS
Package Contents	1 x Base AP 1 x Directional panel antenna(14dBi&17dBi) 4 x Lightning arrester 4 x Antenna feeder 1 x PoE Adapter 1 x Setting accessory 1 x English user manual
High Gain Dual Band Directional Panel Antenna	
Frequency range (MHz)	2400 ~ 2500 / 5725 ~ 5850
Polarization	Vertical and horizontal polarization
Gain (dBi)	14/17
Half-power beam width (°)	H:90 V:15 / H:90 V:7
Front-Back Ratio (dB)	≥ 23 / ≥ 23
Input Impedance (Ω)	50
Isolation (dB)	≥ 28
Cross-polarization discrimination (dB)	≥ 15@0° ≥10@+/-60°
Superior first lobe inhibition (dB)	15
VSWR	≤ 1.5 / ≤ 1.5

Maximum input power (W)	200 / 100
Lightning protection	DC Ground
Specifications	
Connector type	4 x N Female
Antenna size (mm)	1000*114*54
Package size (mm)	1050*130*110
Antenna weight (kg)	6
Radome material	UPVC
Radome color	Gray
Mechanically adjustable inclination (°)	0 ~ 10
Operating temperature (°C)	-40 ~ 60
Extreme wind speed (m/s)	60
Mounting way	Pole-holding
Mounting hardware (mm)	Φ 35-Φ 75



1KM WLAN Coverage Topology:

For large areas with high density user access request, such as scenic spots, parks, rural areas, recommended to use four units of AP with high gain directional antennas.

Four Units WiFi AP to be One Set :
Each Unit Range 500 Meter with 90 degree Sectors covered,
One Set Range 1000 Meter with 360 degree full coverage.